

Countryside

Gallery & Custom Frame Design

Newtown's AHA! Friday, October 2nd. Original artwork and note cards will be available. Wine and light refreshments will be served.

presents...

Friday
October 2, 2009
6:30pm

LAKEVIEW ARTIST GROUP



ANDREA ACKERT

IT STANDS to reason that someone who is a floral designer, gardener, and lover of nature, who has studied horticulture at Temple University and art at Bucks County Community College, would become an artist. And that is what Andrea is—an artist who continues to study art and paints in many different media.



JAN BLOCK

JAN has had a lifetime of sporadic interest in art. Starting as a child, she worked in oils and later began using acrylics, a medium that she's settled upon throughout her adulthood. Self-taught in the arts, Jan follows her love of art and learning.



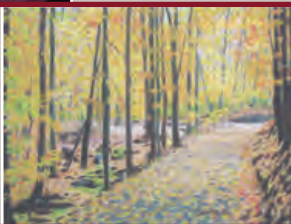
BARBARA GALLELLI

ALWAYS interested in art, Barbara's first experience viewing the world as an artist came by studying photography in college. Inspired and instructed by her mother and artist Katie Krall, Barbara prefers painting with watercolors, but has experimented in a variety of media. Scenes from nature challenge her to master the composition, color and value in each new painting.



NORMA WEST-HERNBERG

NORMA originally studied portrait painting in England many years ago. To express herself and because of her love of color, Norma uses acrylics. Her paintings show that she has found a world of beauty in flowers and nature.



CYNTHIA LAIRD

AFTER a lifetime of interest in the arts, eight years ago Cynthia began pursuing her interest in watercolors. Since then, she has experimented in watercolor, colored pencil, oil pastels and acrylic, but finds that she most enjoys working in acrylic. She has painted still life, portraits, animals and her all-time favorite—flowers.



PENNY LOWRIGHT

PENNY studied art at Temple University and Bucks County Community College and has been influenced by various other Bucks County artists. She is very interested in the Bucks County landscape and the abundance of beautiful flowers native to the area, and enjoys painting in a variety of media.



ELLIE PETRUCCI

ELLIE developed an appreciation for art early in childhood by exploring the Philadelphia Museum of Art. Fascinated and intrigued by classic works of Cézanne, Matisse, VanGogh, Degas, Monet and Manet; the Impressionists and Expressionists influenced her work as an artist. Ellie has also been inspired by other teachers and artists she's encountered along the way.